

AQUA PARK & WELLNESS



Location:

The village of Vrbov is situated near historical town Kežmarok, about 15 km from the highway going from Bratislava to Kosice. Its position near High Tatras national park and historical towns of Spiš region together with the proximity of Polish state border makes it an attractive holiday destination for local and foreign visitors. This place is famous for the healing power of thermal spring /Lubicka's Spa, late Vrbov/. The High Tatras (Vysoké Tatry) mountain chain is one of the best equipped ski regions in Slovakia and is very popular among Russian and Ukrainian tourists searching for hospitable and familiar ambient.

- attractive location close to High Tatras
- picturesque surrounding countryside
- popular holiday and sightseeing region
- a lot of tourist hiking and mountain bike cycling tracks
- region famous for thermal water sources - several other baths are prospering and are highly profitable (in Poprad, Besenova, Liptovský Mikulas, Oravice)

Distances:

- | | |
|---------------------------------|-------|
| - Kežmarok | 7 km |
| - Poprad (airport) | 16 km |
| - Levoča | 20 km |
| - Velka Lomnica /golf course/ | 7 km |
| - Tatras national park | 12 km |
| - Slovak Paradise national park | 24 km |
| - Pieniny national park | 40 km |



Actual situation and existing facilities:

- popular destination for tourists from Poland
- large-capacity car parking
- 7 existing swimming pools
- car camping facility and B&B
- sidewalk from the centre of the village to the aqua park



focused on detail

Aqua park project:

The thermal spa in Vrbov was built in the 70's of the last century and thus important changes of the structure and conception of the area are required. The actual requirements of clients together with modern technologies are shaping the main idea of the project. Two geothermal drill holes with 56 and 59°C hot water are available for the construction of two premises. The wellness centre with spa and accommodation (hotel) will provide excellent services for people searching for regeneration and relax. The aqua park with fun & kid zone and water attractions will attract those with active lifestyle and children. The naturally heated water is used to heat the hotel, provide all the hot water in the hotel's bathrooms, all the heated water in the indoor and outdoor pools as well as all the buildings in residential zone.

- indoor and outdoor pools
- all year pool – 1100 visitors a day
- summer pool – 5000 visitors a day
- hotel – 120 beds in double rooms
- spa complex – 300 clients
- wellness world
- water attractions (slides, flumes, children's play areas)
- bars, cafes and restaurants
- residential zone with bungalows and terraced houses



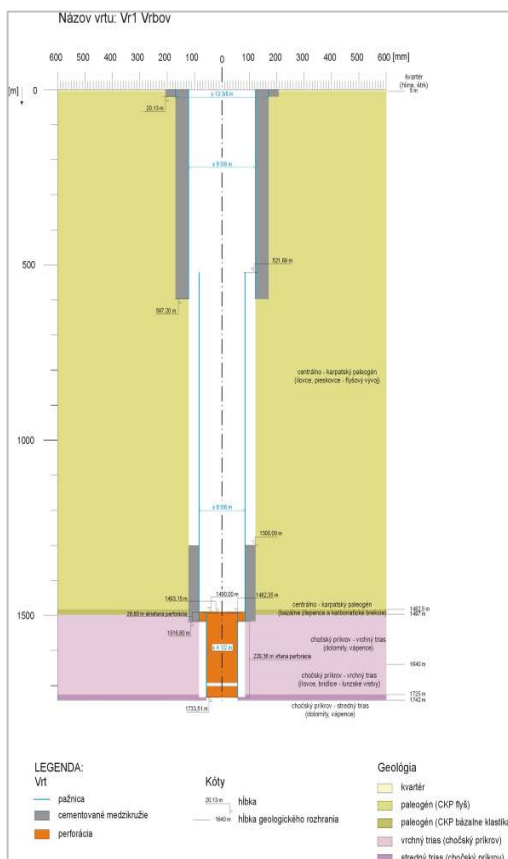
← southern view



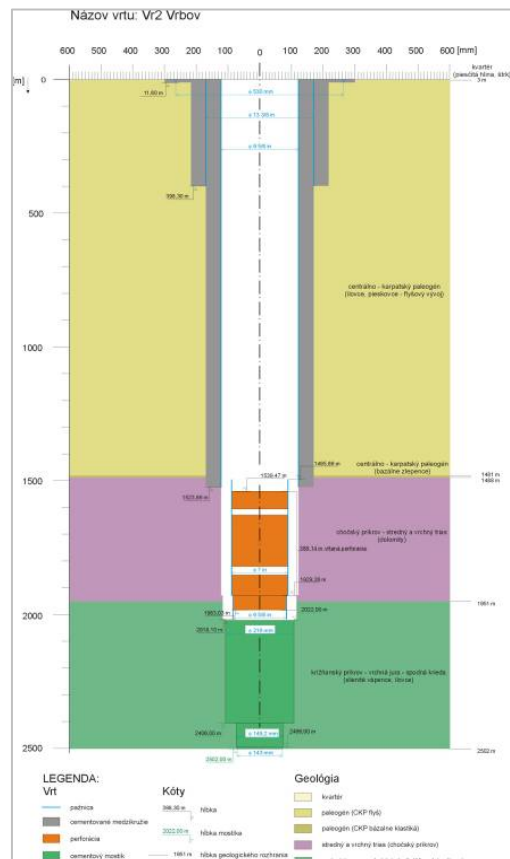
← northern view



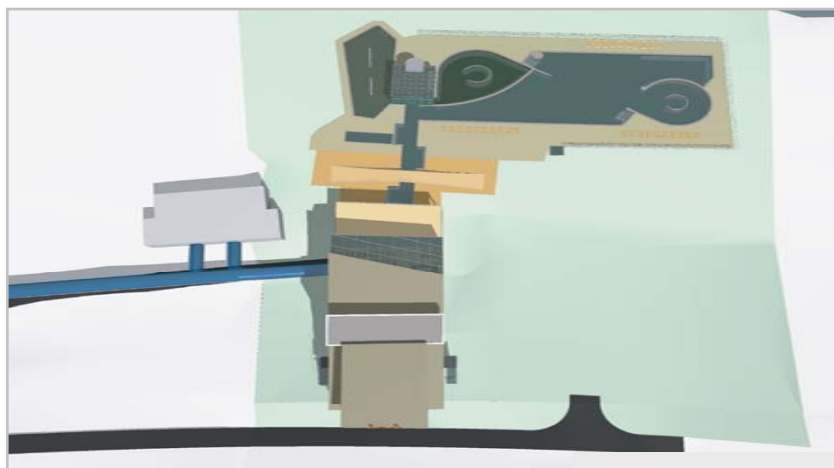
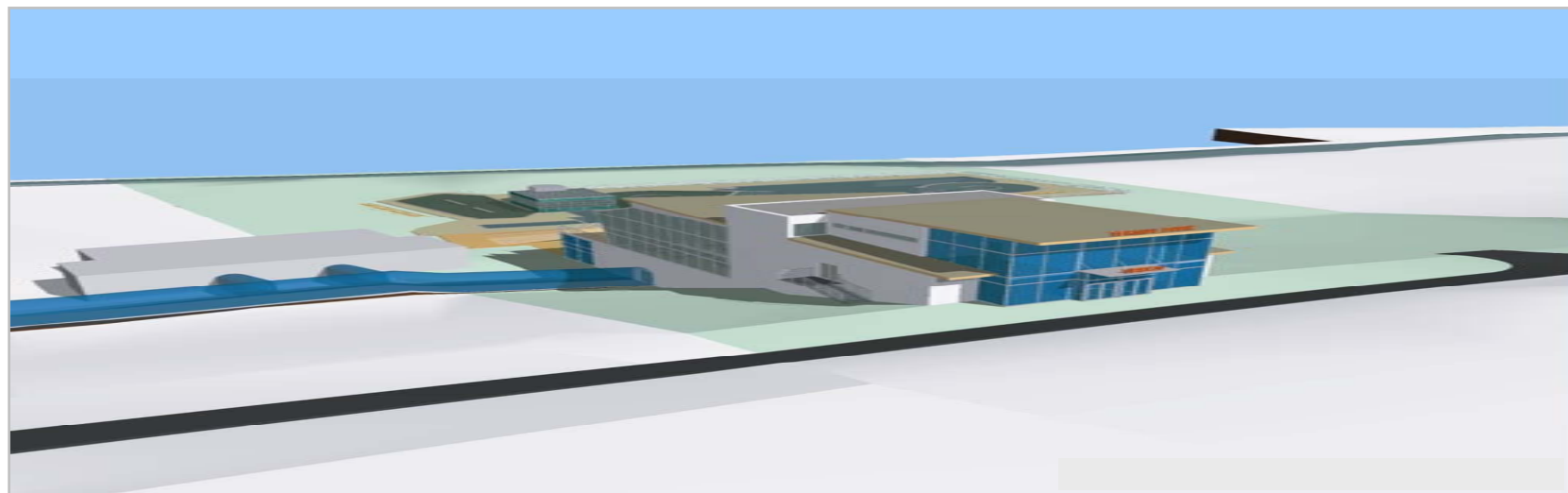
Thermal drill hole No.1



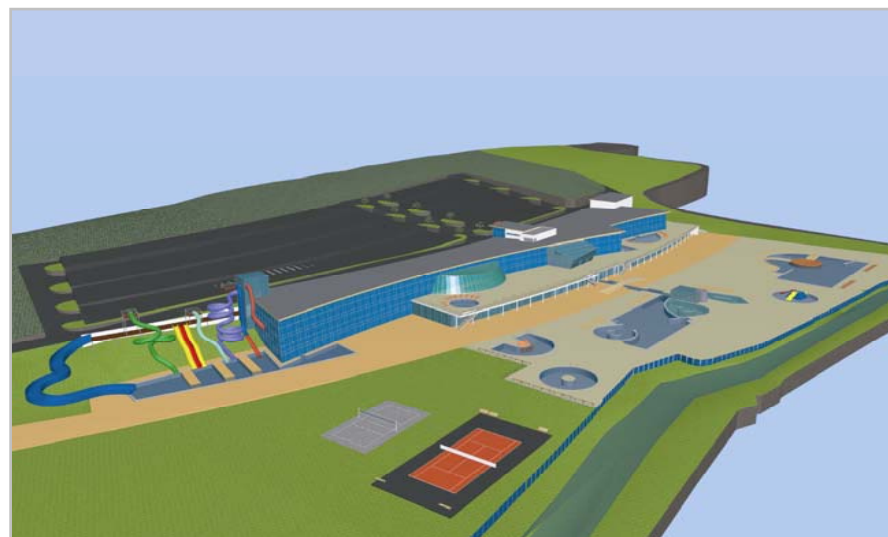
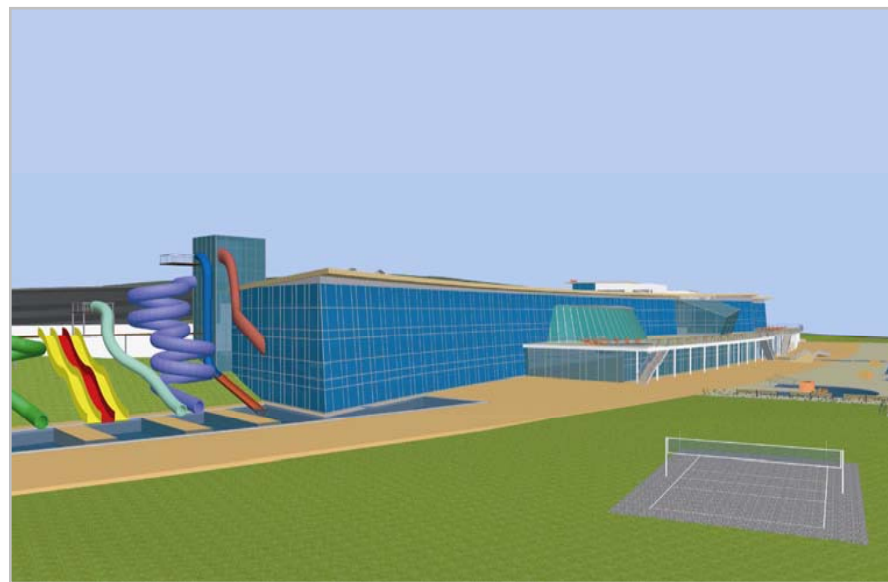
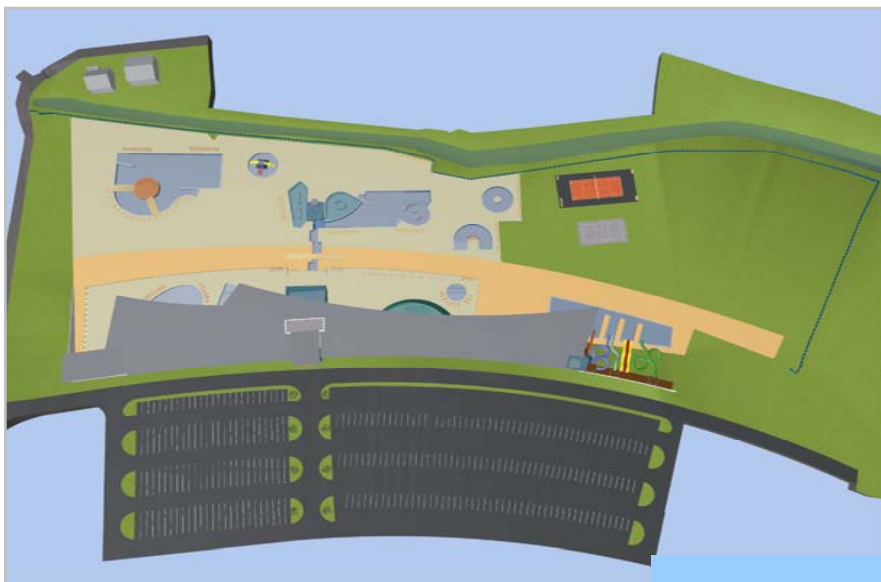
Thermal drill hole No.2



WELLNESS & SPA



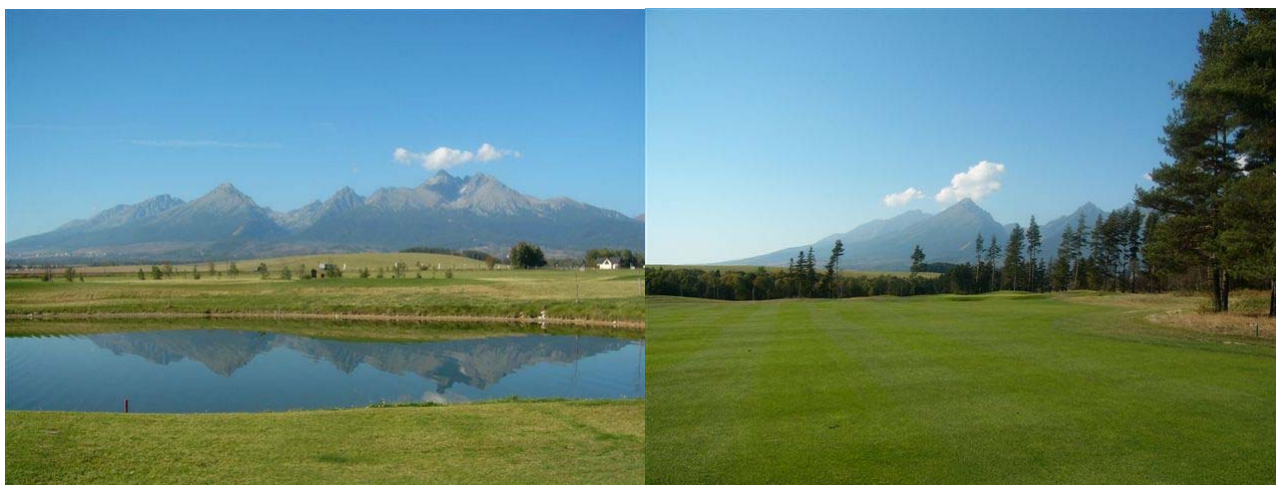
AQUA PARK



focused on detail

Interesting places:

- Veľká Lomnica – 7 km
- Black Stork - 18-holes professional golf course www.blackstork.sk



Kezmarok – 7 km

- historical town with monuments and museums
- Kežmarok castle with expositions of crafts, weapons, shooting association
- protestant Church built in 1688 with an organ of 1719 with wooden pipes



- Poprad – 16 km

- historical parts (Spisska Sobota, Straze,...)
- airport with daily flights to Prague
- shops and shopping malls
- historical parts (Spisska Sobota, Straze,...)
- direct tram connection to the resorts in High Tatras



- Levoča – 20 km
- historical town with picturesque center surrounded by a well-preserved town wall
- Renaissance church with the highest (18,62 m.in height) wooden altar in Europe, carved by Master Paul of Levoča around 1520
- museum dedicated to the work of Master Paul
- wrought-iron 'Cage of Shame', dating back to the 17th century, used for public punishment of miscreants
- traditional pilgrim site of Mariánska hora just above the town



- High Tatras – 12 km
- 11 peaks over 2500 m
- national park with preserved areas
- one of most popular tourist sites in central European region
- developed infrastructure for summer and winter holiday
- lot of hiking and mountain bikes tracks
- ski resorts with possibility of down hill and cross country skiing
- restaurants, hotels, B&B, campings, etc.



- Slovak Paradise – 24 km
- national park with preserved nature reserves
- first protected reserve in the area of the Slovak Paradise founded in 1890
- creeks and waterfalls
- underground caves and holes
- Dobšinská Ice Cave (since 2000 a UNESCO World Heritage Site)
- 300 km of hiking tracks with ladders, chains and bridges
- tourist accommodation (hotels, B&B, camping,...)



focused on detail

- Pieniny national park – 40 km
- national park on borders with Poland
- smallest national park in Slovakia (37.5 km²)
- traditional folklore and architecture
- Dunajec River Gorge with traditional wooden canoe rafting
- popular hiking tracks



